

# hydrorise implant



## USER'S GUIDE

High-rigidity addition silicone

# Hydrorise Implant, simply accurate

**Hydrorise Implant** has been conceived as an extension of the Hydrorise line, already known in the market thanks to its excellent performance. Made with high-quality raw materials, it represents a step forward in the world of implant impressions to satisfy the growing needs of dental professionals.

Hydrorise Implant is a **high-rigidity addition silicone (VPS)**, **ideal for impression taking in implantology**, offering its best performance in multi-unit implant cases.

It is a **precise, reliable, safe** and **easy-to-use** material. Additionally, it has the advantage of being **radiopaque** and **scannable** without using matting sprays.

Hydrorise Implant is the Zhermack solution for taking an **accurate impression**, which is the precondition to restore functionality and offer a harmonious smile.

## Advantages

### Accurate

- ▶ High rigidity and consistency (Heavy and Medium Body)
- ▶ High reproduction of detail (Light Body)

### Reliable

- ▶ High dimensional stability
- ▶ Optimal working time, even in the most complex cases

### Safe

- ▶ Radiopaque
- ▶ Biocompatible
- ▶ Stable after disinfection

### Easy to use

- ▶ Scannable without matting sprays
- ▶ Usable with every kind of impression tray

### Comfortable for the patient

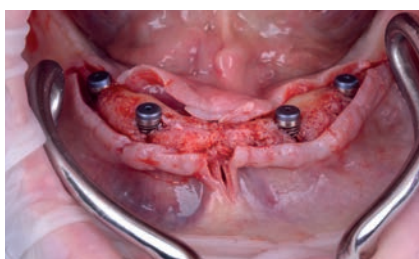
- ▶ Mint scented
- ▶ Easily removable

# MONOPHASE TECHNIQUE

One step with single viscosity to correctly capture and transfer all relevant information from the implant prosthesis to the dental laboratory.



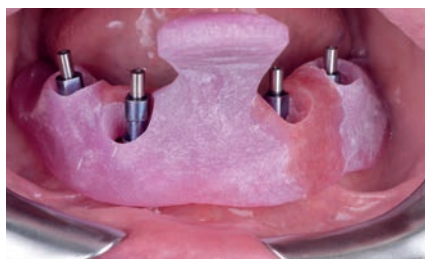
1. Patient's baseline



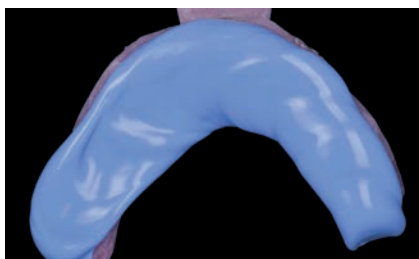
2. Implants in the jaw



3. Positioning the pick-up transfers on the implants



4. Custom tray test



5. Impression material before insertion into the mouth



6. The finished impression



7. Evaluation of the denture



8. Final result on left

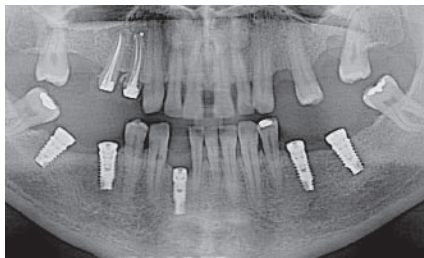


9. Final result on right

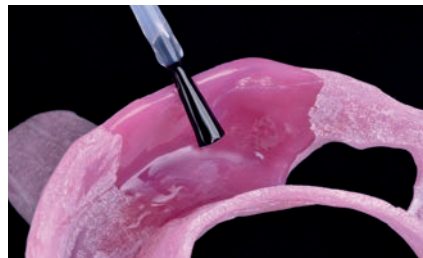


# SIMULTANEOUS TECHNIQUE

One step with double viscosity to correctly capture and transfer all relevant information from the implant prosthesis to the dental laboratory.



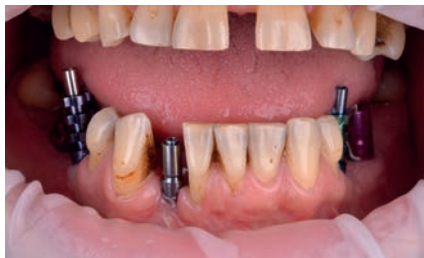
1. Patient's x-ray with implants positioned for prosthetization



2. Adhesive on the custom tray



3. Closing the operculum with wax



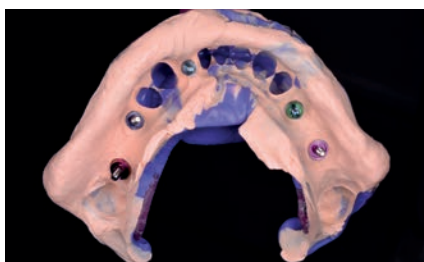
4. Positioning the pick-up transfers on the implants



5. Inserting light body material into the patient's mouth



6. Inserting the tray loaded with heavy body material into the mouth



7. The finished impression



8. Final result



9. The patient's smile, showing the finished result

# Technical features



Product	Delivery system	Viscosity	Recommended techniques	Type of setting	Working time* (min:s)	Time in mouth* (min:s)	Setting time* (min:s)	ISO 4823	Elastic recovery	Linear dimensional change (after 24 h)	Hardness (Shore A)
<b>Hydrorise Implant Heavy Body</b>	5:1 automatic mixing	Heavy	Single step impression	Normal set	02:00	03:30	05:30	Type 1 Heavy-bodied Consistency	> 99.3 %	< 0.25 %	70
<b>Hydrorise Implant Medium Body</b>	5:1 automatic mixing	Medium	Monophase impression	Normal set	02:00	03:30	05:30	Type 2 Medium-bodied Consistency	> 99.3 %	< 0.25 %	60
<b>Hydrorise Implant Light Body</b>	1:1 dispenser	Light	Single step impression	Normal set	02:00	03:30	05:30	Type 3 Light-bodied Consistency	> 99.3 %	< 0.25 %	55

\* the times mentioned must be intended at 35 °C - 95 °F

## Codes

### Hydrorise Implant Heavy Body – High viscosity A-Silicone

Code	Packaging
C207090	2 x 380 ml cartridges + 15 dynamic-static mixing tips + 2 mixing tip lockers
C207095	Hydrorise Implant Intro pack Kit Heavy/Light: 1 x 380 ml Heavy Body + 1 x 50 ml Light Body + 6 dynamic-static mixing tips + 6 mixing tips yellow + 1 mixing tip locker



5:1

### Hydrorise Implant Medium Body – Medium viscosity A-Silicone

Code	Packaging
C207092	2 x 380 ml cartridges + 15 dynamic-static mixing tips + 2 mixing tip lockers
C207096	Hydrorise Implant Intro pack Medium Body: 1 x 380 ml Medium Body + 6 dynamic-static mixing tips + 1 mixing tip locker



5:1

### Hydrorise Implant Light Body – Low viscosity A-Silicone

Code	Packaging
C207091	2 x 50 ml cartridges + 12 mixing tips yellow
C207095	Hydrorise Implant Intro pack Kit Heavy/Light: 1 x 380 ml Heavy Body + 1 x 50 ml Light Body + 6 dynamic-static mixing tips + 6 mixing tips yellow + 1 mixing tip locker



# Fulfilling your needs